

# Wheeled Excavator

## **A 924 Heavy Lift**

Litronic®

Operating Weight:  
**26,500 – 28,000 kg**

Engine:  
**160 kW / 217 HP**

**Stage IV**

Bucket Capacity:  
**0.75 – 1.70 m<sup>3</sup>**



# **LIEBHERR**

# Technical Data



## Diesel Engine

<b>Rating per ISO 9249</b>	160 kW (217 HP) at 1,700 RPM
<b>Model</b>	Liebherr D934
<b>Type</b>	4 cylinder in-line
Bore/Stroke	122/150 mm
Displacement	7.0 l
<b>Engine operation</b>	4-stroke diesel Common-Rail turbo-charged and after-cooler reduced emissions
<b>Air cleaner</b>	dry-type air cleaner with pre-cleaner, primary and safety elements
<b>Engine idling</b>	sensor controlled
<b>Electrical system</b>	
Voltage	24 V
Batteries	2 x 135 Ah / 12 V
Alternator	three-phase current 28 V / 140 A
<b>Stage IV</b>	
Harmful emissions values	in accordance with 97/68/EG stage IV
Emission control	Liebherr-SCR technology
Fuel tank	330 l
Urea tank	46 l



## Cooling System

<b>Diesel engine</b>	water-cooled compact cooling system consisting cooling unit for water, hydraulic oil and charge air with stepless thermostatically controlled fan
----------------------	--



## Hydraulic Controls

<b>Power distribution</b>	via control valves in single block with integrated safety valves
<b>Servo circuit</b>	
Attachment and swing	with hydraulic pilot control and proportional joystick levers
Chassis	electroproportional via foot pedal
<b>Additional functions</b>	via switch or electroproportional foot pedals
<b>Proportional control</b>	proportionally acting transmitters on the joysticks for additional hydraulic functions



## Hydraulic System

<b>Hydraulic pump</b>	
for attachment and travel drive	2 Liebherr axial piston variable displacement pumps (double construction)
Max. flow	2 x 231 l/min.
Max. pressure	350 bar, PowerLift 380 bar
for swing drive	reversible axial piston variable displacement pump, closed-loop circuit
Max. flow	140 l/min.
Max. pressure	420 bar
<b>Hydraulic pump regulation and control</b>	Liebherr-Synchron-Comfort-system (LSC) with electronic engine speed sensing regulation, pressure and flow compensation, torque controlled swing drive priority
<b>Hydraulic tank</b>	175 l
<b>Hydraulic system</b>	max. 430 l
<b>Hydraulic oil filter</b>	1 main return filter with integrated partial micro filtration (5 µm)
<b>MODE selection</b>	adjustment of engine and hydraulic performance via a mode pre-selector to match application, e.g. for especially economical and environmentally friendly operation or for maximum digging performance and heavy-duty jobs
S (Sensitive)	mode for precision work and lifting through very sensitive movements
E (Eco)	mode for especially economical and environmentally friendly operation
P (Power)	mode for high performance with low fuel consumption
P+ (Power-Plus)	mode for highest performance and for very heavy duty applications, suitable for continuous operation
<b>Engine speed and performance setting</b>	stepless alignment of engine output and hydraulic power via engine speed
Option	Tool Control: ten preadjustable pump flows and pressures for add on tools



## Swing Drive

<b>Drive</b>	Liebherr axial piston motor in a closed system, Liebherr planetary reduction gear
<b>Swing ring</b>	Liebherr, sealed race ball bearing swing ring, internal teeth
<b>Swing speed</b>	0 – 9.5 RPM stepless
<b>Swing torque</b>	76 kNm
<b>Holding brake</b>	wet multi-disc (spring applied, pressure released)
<b>Option</b>	pedal controlled positioning swing brake



## Operator's Cab

<b>Cab</b>	ROPS safety cab structure (roll-over protection system) with individual windscreens or featuring a slide-in subpart under the ceiling, work headlights integrated in the ceiling, a door with a sliding window (can be opened on both sides), large stowing and depositing possibilities, shock-absorbing suspension, sound-damping insulating, tinted laminated safety glass, separate window shades for the sunroof window and windscreen
<b>Operator's seat Standard</b>	air cushioned operator's seat with 3D-adjustable armrests, headrest, lap belt, seat heater, manual weight adjustment, adjustable seat cushion inclination and length and mechanical lumbar vertebrae support
<b>Operator's seat Comfort (Option)</b>	in addition to operator's seat standard: lockable horizontal suspension, automatic weight adjustment, adjustable suspension stiffness, pneumatic lumbar vertebrae support and passive seat climatization with active coal
<b>Operator's seat Premium (Option)</b>	in addition to operator's seat comfort: active electronic weight adjustment (automatic readjustment), pneumatic low frequency suspension and active seat climatization with active coal and ventilator
<b>Control system</b>	joysticks with arm consoles and swivel seat, folding left arm console
<b>Operation and displays</b>	large high-resolution operating unit, self-explanatory, colour display with touchscreen, video-compatible, numerous setting, control and monitoring options, e.g. air conditioning control, fuel consumption, machine and tool parameters
<b>Air-conditioning</b>	automatic air-conditioning, recirculated air function, fast de-icing and demisting at the press of a button, air vents can be operated via a menu; recirculated air and fresh air filters can be easily replaced and are accessible from the outside; heating-cooling unit, designed for extreme outside temperatures, sensors for solar radiation, inside and outside temperatures



## Undercarriage

<b>Drive</b>	oversized two speed power shift transmission with additional creeper speed, Liebherr axial piston motor with functional brake valve on both sides
<b>Pulling force</b>	135 kN
<b>Travel speed</b>	0 – 3.5 km/h stepless (creeper speed off-road) 0 – 7.0 km/h stepless (off-road) 0 – 13.0 km/h stepless (creeper speed on-road) 0 – 20.0 km/h stepless (road travel)
<b>Driving operation</b>	automotive driving using accelerator pedal, cruise control function: storage of variable accelerator pedal positions, both off-road and on-road
<b>Axles</b>	manual or automatic hydraulically controlled front axle oscillation lock
<b>Service brake</b>	two circuit travel brake system with accumulator; wet and backlash-free disc brake
<b>Automatic digging brake</b>	works automatically when driving off (accelerator pedal actuation) and when the machine is stationary (engagement); the digging brake engages automatically – can be coupled with automatic swing axle lock
<b>Holding brake</b>	wet multi-disc (spring applied, pressure released)
<b>Stabilization</b>	stabilizing blade rear + 2 point outriggers front stabilizing blade front + 2 point outriggers rear 4 point outriggers
<b>EW-undercarriage</b>	2.75 m/9'



## Attachment

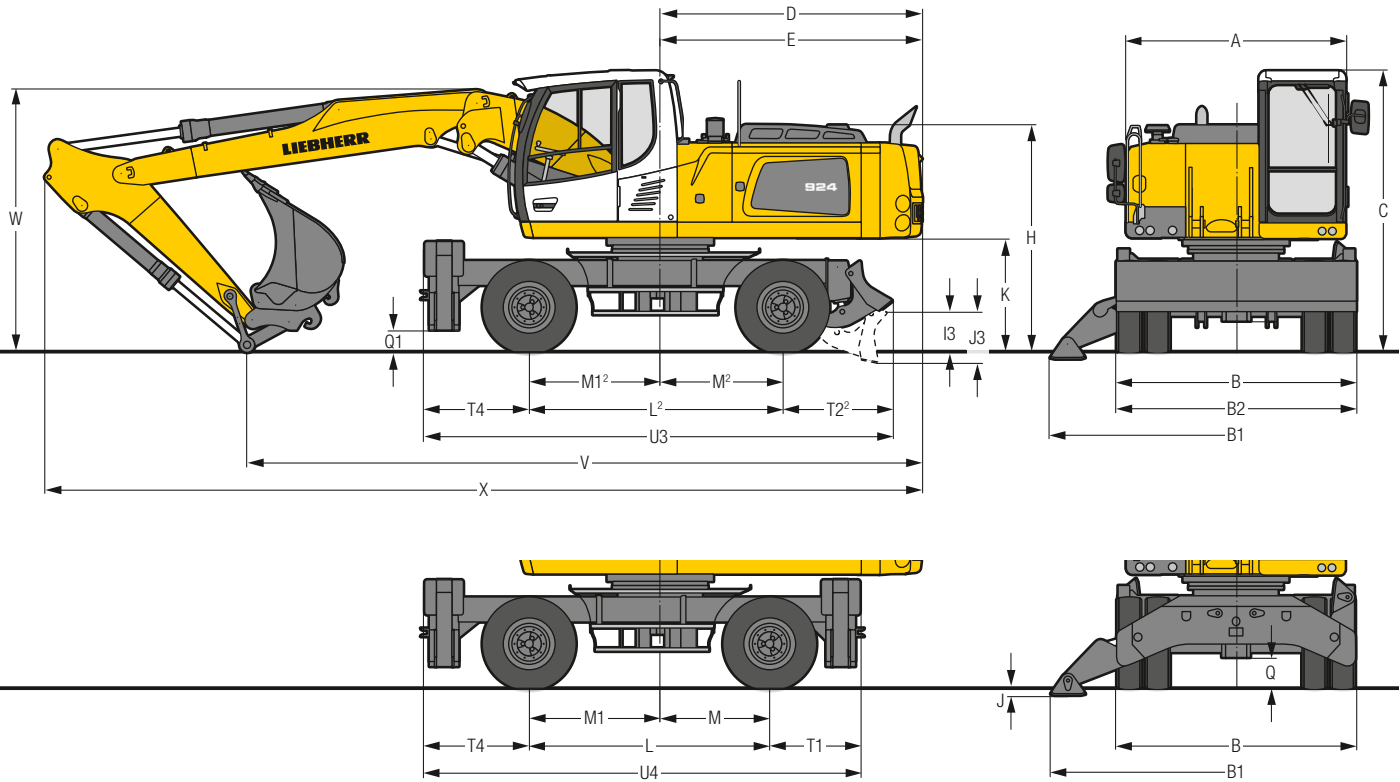
<b>Type</b>	high-strength steel plates at highly stressed points for the toughest requirements. Complex and stable mountings of attachment and cylinders
<b>Hydraulic cylinders</b>	Liebherr cylinders with special seal system as well as shock absorption
<b>Bearings</b>	sealed, low maintenance



## Complete Machine

<b>Lubrication</b>	Liebherr central lubrication system for uppercarriage and attachment, automatically
<b>Noise emission</b>	
ISO 6396	$L_{pA}$ (inside cab) = 72 dB(A)
2000/14/EC	$L_{WA}$ (surround noise) = 104 dB(A)

# Dimensions



	mm
<b>A</b>	2,525
<b>B</b>	2,750
<b>B1</b>	4,260
<b>B2</b>	2,750
<b>C</b>	3,220
<b>D</b>	3,030
<b>E</b>	3,030
<b>H</b>	2,605
<b>I3</b>	465
<b>J</b>	80
<b>J3</b>	590
<b>K</b>	1,280
<b>L</b>	2,750
<b>L<sup>2)</sup></b>	2,900
<b>M</b>	1,250
<b>M<sup>2)</sup></b>	1,400
<b>M1</b>	1,500
<b>M1<sup>2)</sup></b>	1,500
<b>Q</b>	350
<b>Q1</b>	250
<b>T1</b>	1,040
<b>T2<sup>2)</sup></b>	1,410
<b>T4</b>	1,190
<b>U3</b>	5,350
<b>U4</b>	4,980

<sup>2)</sup> Undercarriage-2 point outriggers front, stabilizing blade rear

E = Tail radius

Tyres 11.00-20

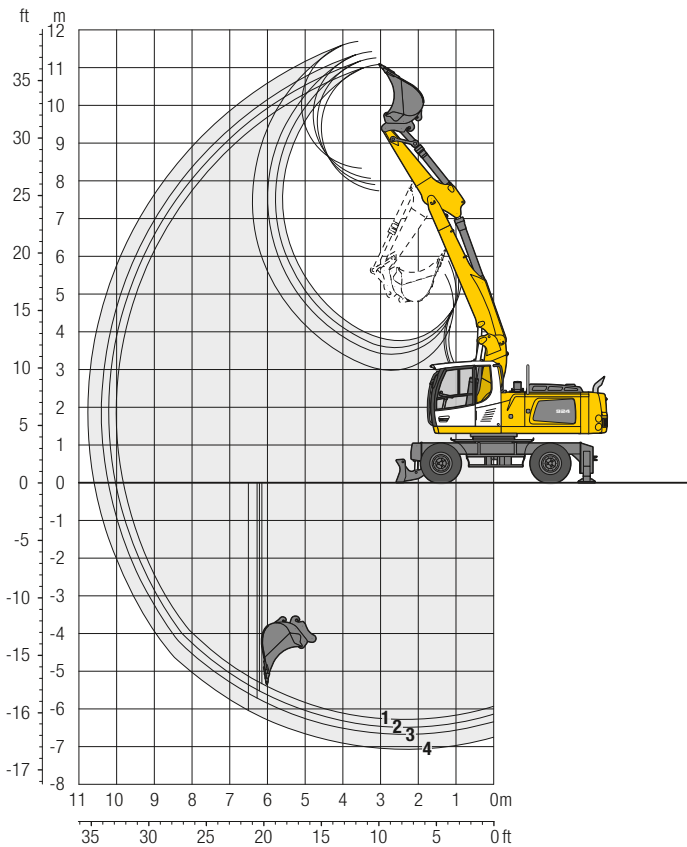
	Stick m	Two-piece boom 5.80 m HD	
		2 pt. outriggers + blade mm	4 pt. outriggers mm
<b>V</b>	2.25	7,780	7,780
	2.45	7,330	7,330
	2.65	7,130	7,130
<b>W</b>	3.05	6,830	6,830
	2.25	3,150	3,150
	2.45	3,100	3,100
<b>X</b>	2.65	3,100	3,100
	3.05	3,200	3,200
	2.25	10,180	10,180
	2.45	10,180	10,180
	2.65	10,180	10,180
	3.05	10,180	10,180

Dimensions are with attachment over steering axle



# Backhoe Bucket

with Two-Piece Boom 5.80 m HD



## Digging Envelope

with quick coupler		1	2	3	4
Stick length	m	2.25	2.45	2.65	3.05
Max. digging depth	m	6.30	6.50	6.70	7.05
Max. reach at ground level	m	9.85	10.05	10.25	10.60
Max. dumping height	m	7.75	7.90	8.05	8.35
Max. teeth height	m	11.10	11.25	11.45	11.70
Min. attachment radius	m	3.25	3.15	3.10	3.15

## Digging Forces

without quick coupler		1	2	3	4
Max. digging force (ISO 6015)	kN	148.5	139.7	131.9	118.8
	t	15.1	14.2	13.4	12.1
Max. breakout force (ISO 6015)	kN	169.6	169.6	169.6	169.6
	t	17.3	17.3	17.3	17.3

Max. breakout force with ripper bucket

218.4 kN (22.3 t)

## Operating Weight

The operating weight includes the basic machine with 8 tyres plus intermediate rings, two-piece boom 5.80 m (HD), stick 2.45 m, quick coupler SW48 and bucket 1,400 mm/1.35 m<sup>3</sup>.

Undercarriage versions	Weight (kg)
A 924 Heavy Lift Litronic <sup>1)</sup> with 2 pt. outriggers + stabilizer blade	27,100
A 924 Heavy Lift Litronic <sup>1)</sup> with 4 pt. outriggers	27,400

## Buckets Machine stability per ISO 10567\* (75% of tipping capacity)

Cutting width mm	Capacity ISO 7451 <sup>1)</sup> m <sup>3</sup>	Weight kg	Stabilizers raised				2 point outriggers + stabilizer blade down				4 point outriggers down			
			Stick length (m)				Stick length (m)				Stick length (m)			
			2.25	2.45	2.65	3.05	2.25	2.45	2.65	3.05	2.25	2.45	2.65	3.05
850 <sup>2)</sup>	0.75	620	■	■	■	■	■	■	■	■	■	■	■	
1,050 <sup>2)</sup>	0.95	710	■	■	■	■	■	■	■	■	■	■	■	
1,250 <sup>2)</sup>	1.15	810	■	■	■	■	■	■	■	■	■	■	■	
1,400 <sup>2)</sup>	1.35	850	■	■	■	■	■	■	■	■	■	■	■	
1,500 <sup>2)</sup>	1.45	880	■	■	■	△	■	■	■	■	■	■	■	
1,600 <sup>2)</sup>	1.55	940	■	■	△	△	■	■	■	■	■	■	■	
850 <sup>3)</sup>	0.75	690	■	■	■	■	■	■	■	■	■	■	■	
1,050 <sup>3)</sup>	0.95	800	■	■	■	■	■	■	■	■	■	■	■	
1,250 <sup>3)</sup>	1.15	910	■	■	■	■	■	■	■	■	■	■	■	
1,400 <sup>3)</sup>	1.35	960	■	■	■	■	■	■	■	■	■	■	■	
1,500 <sup>3)</sup>	1.45	1,000	■	■	■	△	■	■	■	■	■	■	■	
1,600 <sup>3)</sup>	1.55	1,060	■	■	△	△	■	■	■	■	■	■	■	
850 <sup>4)</sup>	0.80	630	■	■	■	■	■	■	■	■	■	■	■	
1,050 <sup>4)</sup>	1.05	720	■	■	■	■	■	■	■	■	■	■	■	
1,250 <sup>4)</sup>	1.30	800	■	■	■	■	■	■	■	■	■	■	■	
1,400 <sup>4)</sup>	1.50	870	■	■	■	△	■	■	■	■	■	■	■	
1,500 <sup>4)</sup>	1.65	890	■	■	△	△	■	■	■	■	■	■	■	
1,600 <sup>4)</sup>	1.70	950	■	△	△	△	■	■	■	■	■	■	■	

\* Indicated loads are based on ISO 10567 and do not exceed 75% of tipping or 87% of hydraulic capacity, max. stick length without quick coupler, lifted 360° on firm with blocked oscillating axle

<sup>1)</sup> comparable with SAE (heaped)

<sup>2)</sup> Bucket with teeth <sup>3)</sup> Bucket with teeth in HD-version <sup>4)</sup> Bucket with cutting edge (also available in HD-version)

Max. material weight ■ = ≤ 1.8 t/m<sup>3</sup>, ■ = ≤ 1.5 t/m<sup>3</sup>, △ = ≤ 1.2 t/m<sup>3</sup>, – = not authorised

# Lift Capacities

with Two-Piece Boom 5.80 m HD

## Stick 2.25 m

m	Under-carriage	3.0 m		4.5 m		6.0 m		7.5 m		9.0 m		m	
<b>9.0</b>	Stabilizers raised			7.4*	7.4*					7.1*	7.1*	<b>4.6</b>	
	2 pt. + blade down			7.4*	7.4*					7.1*	7.1*		
	4 pt. outriggers down			7.4*	7.4*					7.1*	7.1*		
<b>7.5</b>	Stabilizers raised			8.6*	8.6*	5.9	7.5*			5.2	5.9*	<b>6.4</b>	
	2 pt. + blade down			8.6*	8.6*	7.5*	7.5*			5.9*	5.9*		
	4 pt. outriggers down			8.6*	8.6*	7.5*	7.5*			5.9*	5.9*		
<b>6.0</b>	Stabilizers raised			8.9*	8.9*	6.0	8.1	4.0	5.5		4.0	5.4*	<b>7.5</b>
	2 pt. + blade down			8.9*	8.9*	8.4*	8.4*	5.7*	5.7*		5.4*	5.4*	
	4 pt. outriggers down			8.9*	8.9*	8.4*	8.4*	5.7*	5.7*		5.4*	5.4*	
<b>4.5</b>	Stabilizers raised	16.1	16.7*	8.9	11.4*	6.0	7.9	4.1	5.6		3.4	4.7	<b>8.2</b>
	2 pt. + blade down	16.7*	16.7*	11.4*	11.4*	8.8	9.0*	6.3	7.7*		5.3*	5.3*	
	4 pt. outriggers down	16.7*	16.7*	11.4*	11.4*	9.0*	9.0*	7.7*	7.7*		5.3*	5.3*	
<b>3.0</b>	Stabilizers raised	15.3	16.6*	8.6	11.8	5.9	7.8	4.1	5.6		3.1	4.3	<b>8.6</b>
	2 pt. + blade down	16.6*	16.6*	13.2	13.3*	8.7	9.8*	6.3	7.9*		4.9	5.4*	
	4 pt. outriggers down	16.6*	16.6*	13.3*	13.3*	9.8*	9.8*	7.6	7.9*		5.4*	5.4*	
<b>1.5</b>	Stabilizers raised	15.1	16.9*	8.5	11.6	5.9	7.7	3.9	5.4		3.0	4.2	<b>8.6</b>
	2 pt. + blade down	16.9*	16.9*	13.0	14.2*	8.6	10.3*	6.2	8.1*		4.8	5.8*	
	4 pt. outriggers down	16.9*	16.9*	14.2*	14.2*	10.3*	10.3*	7.6	8.1*		5.8*	5.8*	
<b>0</b>	Stabilizers raised	15.1	19.9*	8.4	11.6	5.6	7.8	3.8	5.3		3.0	4.3	<b>8.4</b>
	2 pt. + blade down	19.9*	19.9*	13.0	14.3*	8.7	10.3*	6.0	8.1*		4.9	6.4*	
	4 pt. outriggers down	19.9*	19.9*	14.3*	14.3*	10.3*	10.3*	7.5	8.1*		6.1	6.4*	
<b>-1.5</b>	Stabilizers raised	14.6	22.9	8.1	11.7	5.3	7.4	3.6	5.1		3.3	4.6	<b>7.9</b>
	2 pt. + blade down	23.0*	23.0*	13.3	14.4*	8.5	10.5*	5.8	7.6*		5.3	6.1*	
	4 pt. outriggers down	23.0*	23.0*	14.4*	14.4*	10.5	10.5*	7.3	7.6*		6.1*	6.1*	
<b>-3.0</b>	Stabilizers raised	14.5	23.6	7.8	11.4	5.0	7.1				3.9	5.3*	<b>7.1</b>
	2 pt. + blade down	23.7*	23.7*	13.2	14.9*	8.1	9.7*				5.3*	5.3*	
	4 pt. outriggers down	23.7*	23.7*	14.9*	14.9*	9.7*	9.7*				5.3*	5.3*	
<b>-4.5</b>	Stabilizers raised	14.2	19.3*	7.5	9.8*						6.5	7.4*	<b>5.0</b>
	2 pt. + blade down	19.3*	19.3*	9.8*	9.8*						7.4*	7.4*	
	4 pt. outriggers down	19.3*	19.3*	9.8*	9.8*						7.4*	7.4*	

## Stick 2.45 m

m	Under-carriage	3.0 m		4.5 m		6.0 m		7.5 m		9.0 m		m
<b>9.0</b>	Stabilizers raised			7.7*	7.7*							<b>4.9</b>
	2 pt. + blade down			7.7*	7.7*							
	4 pt. outriggers down			7.7*	7.7*							
<b>7.5</b>	Stabilizers raised					6.0	7.4*					<b>6.7</b>
	2 pt. + blade down					7.4*	7.4*					
	4 pt. outriggers down					7.4*	7.4*					
<b>6.0</b>	Stabilizers raised			8.0*	8.0*	6.0	8.1	4.1	5.6			<b>7.8</b>
	2 pt. + blade down			8.0*	8.0*	8.2*	8.2*	6.3	6.3*			
	4 pt. outriggers down			8.0*	8.0*	8.2*	8.2*	6.3*	6.3*			
<b>4.5</b>	Stabilizers raised	14.0*	14.0*	8.9	11.0*	5.9	7.9	4.1	5.6			<b>8.4</b>
	2 pt. + blade down	14.0*	14.0*	11.0*	11.0*	8.8*	8.8*	6.4	7.6*			
	4 pt. outriggers down	14.0*	14.0*	11.0*	11.0*	8.8*	8.8*	7.6*	7.6*			
<b>3.0</b>	Stabilizers raised	15.3	16.9*	8.6	11.7	5.8	7.8	4.1	5.6			<b>8.8</b>
	2 pt. + blade down	16.9*	16.9*	13.0*	13.0*	8.7	9.6*	6.3	7.8*			
	4 pt. outriggers down	16.9*	16.9*	13.0*	13.0*	9.6*	9.6*	7.6	7.8*			
<b>1.5</b>	Stabilizers raised	15.1	16.7*	8.5	11.5	5.8	7.7	4.0	5.5			<b>8.8</b>
	2 pt. + blade down	16.7*	16.7*	13.0	14.1*	8.6	10.2*	6.2	8.0*			
	4 pt. outriggers down	16.7*	16.7*	14.1*	14.1*	10.2*	10.2*	7.6	8.0*			
<b>0</b>	Stabilizers raised	15.1	19.4*	8.4	11.6	5.6	7.8	3.8	5.3			<b>8.6</b>
	2 pt. + blade down	19.4*	19.4*	13.0	14.2*	8.6	10.3*	6.0	8.0*			
	4 pt. outriggers down	19.4*	19.4*	14.2*	14.2*	10.2	10.3*	7.5	8.0*			
<b>-1.5</b>	Stabilizers raised	14.6	22.7*	8.1	11.7	5.3	7.5	3.6	5.1			<b>8.2</b>
	2 pt. + blade down	22.7*	22.7*	13.2	14.3*	8.5	10.4*	5.8	7.9*			
	4 pt. outriggers down	22.7*	22.7*	14.3*	14.3*	10.4	10.4*	7.3	7.9*			
<b>-3.0</b>	Stabilizers raised	14.4	23.4	7.9	11.5	5.0	7.1					<b>7.3</b>
	2 pt. + blade down	23.5*	23.5*	13.2	14.8*	8.1	10.1*					
	4 pt. outriggers down	23.5*	23.5*	14.8*	14.8*	10.1*	10.1*					
<b>-4.5</b>	Stabilizers raised	14.2	20.8*	7.5	11.0							<b>5.4</b>
	2 pt. + blade down	20.8*	20.8*	11.1*	11.1*							
	4 pt. outriggers down	20.8*	20.8*	11.1*	11.1*							

## Stick 2.65 m

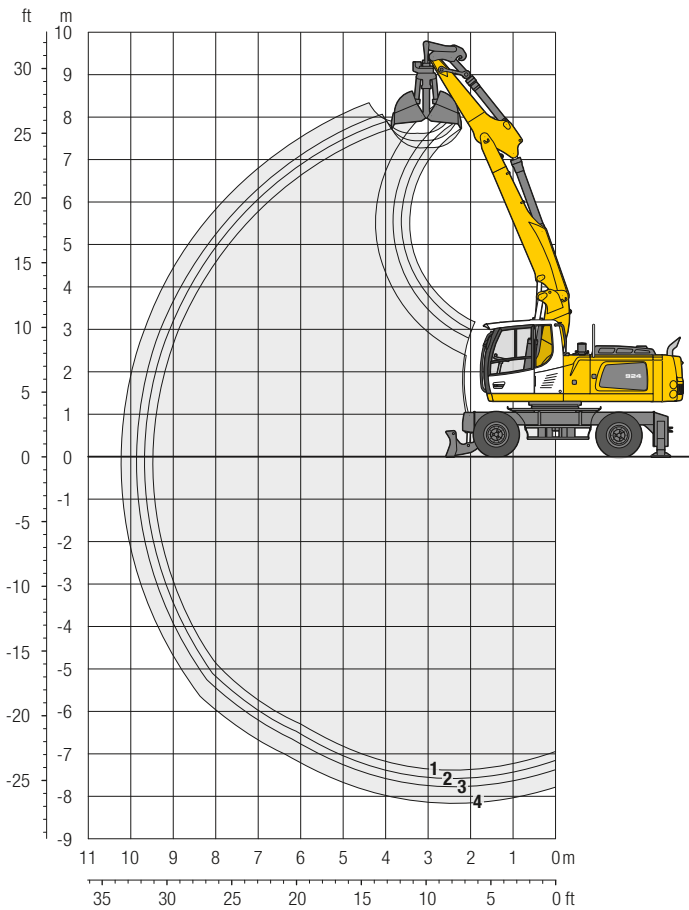
m	Under-carriage	3.0 m		4.5 m		6.0 m		7.5 m		9.0 m		m
<b>9.0</b>	Stabilizers raised			7.6*	7.6*					5.9*	5.9*	<b>5.3</b>
	2 pt. + blade down			7.6*	7.6*					5.9*	5.9*	
	4 pt. outriggers down			7.6*	7.6*					5.9*	5.9*	
<b>7.5</b>	Stabilizers raised					6.0	7.1*			4.6	5.0*	<b>7.0</b>
	2 pt. + blade down					7.1*	7.1*			5.0*	5.0*	
	4 pt. outriggers down					7.1*	7.1*			5.0*	5.0*	
<b>6.0</b>	Stabilizers raised			7.2*	7.2*	6.1	7.7*	4.1	5.6			<b>8.0</b>
	2 pt. + blade down			7.2*	7.2*	7.7*	7.7*	6.3	6.5*			
	4 pt. outriggers down			7.2*	7.2*	7.7*	7.7*	6.5*	6.5*			
<b>4.5</b>	Stabilizers raised	9.9*	9.9*	8.9	9.6*	5.9	7.9	4.2	5.7			<b>8.6</b>
	2 pt. + blade down	9.9*	9.9*	9.6*	9.6*	8.6*	8.6*	6.4	7.4*			
	4 pt. outriggers down	9.9*	9.9*	9.6*	9.6*	8.6*	8.6*	7.4*	7.4*			
<b>3.0</b>	Stabilizers raised	15.4	17.3*	8.6	11.7	5.8	7.7	4.1	5.6			<b>9.0</b>
	2 pt. + blade down	17.3*	17.3*	12.7*	12.7*	8.6	9.5*	6.3	7.7*			
	4 pt. outriggers down	17.3*	17.3*	12.7*	12.7*	9.5*	9.5*	7.6	7.7*			
<b>1.5</b>	Stabilizers raised	15.0	16.6*	8.4	11.5	5.8	7.6	4.0	5.5	2.8	3.9	<b>9.0</b>
	2 pt. + blade down	16.6*	16.6*	12.9	14.0*	8.5	10.1*	6.2	8.0*	4.5	5.2*	
	4 pt. outriggers down	16.6*	16.6*	14.0*	14.0*	10.1*	10.1*	7.5	8.0*	5.2*	5.2*	
<b>0</b>	Stabilizers raised	15.0	19.0*	8.4	11.5	5.6	7.7	3.8	5.3			<b>8.8</b>
	2 pt. + blade down	19.0*	19.0*	12.9	14.1*	8.6	10.2*	6.1	8.0*			
	4 pt. outriggers down	19.0*	19.0*	14.1*	14.1*	10.2	10.2*	7.5	8.0*			
<b>-1.5</b>	Stabilizers raised	14.6	22.3*	8.1	11.7	5.4	7.5	3.6	5.1			<b>8.4</b>
	2 pt. + blade down	22.3*	22.3*	13.1	14.2*	8.6	10.3*	5.8	8.0*			
	4 pt. outriggers down	22.3*	22.3*	14.2*	14.2*	10.3	10.3*	7.3	8.0*			
<b>-3.0</b>	Stabilizers raised	14.3	23.2	7.9	11.5	5.0	7.1	3.5	5.0			<b>7.6</b>
	2 pt. + blade down	23.3*	23.3*	13.3	14.6*	8.2	10.4*	5.5*	5.5*			
	4 pt. outriggers down	23.3*	23.3*	14.6*	14.6*	10.4*	10.4*	5.5*	5.5*			
<b>-4.5</b>	Stabilizers raised	14.2	22.1*	7.5	11.0							<b>5.9</b>
	2 pt. + blade down	22.1*	22.1*	12.3*	12.3*							
	4 pt. outriggers down	22.1*	22.1*	12.3*	12.3*							

## Stick 3.05 m

m	Under-carriage	3.0 m		4.5 m		6.0 m		7.5 m		9.0 m		m
<b>9.0</b>	Stabilizers raised											<b>5.9</b>
	2 pt. + blade down											
	4 pt. outriggers down											
<b>7.5</b>	Stabilizers raised					6.1	6.4*					<b>7.4</b>
	2 pt. + blade down					6.4*	6.4*					
	4 pt. outriggers down					6.4*	6.4*					
<b>6.0</b>	Stabilizers raised					6.1	6.6*	4.2	5.7			<b>8.4</b>
	2 pt. + blade down					6.6*	6.6*	6.1*	6.1*			
	4 pt. outriggers down					6.6*	6.6*	6.1*	6.1*			
<b>4.5</b>	Stabilizers raised			7.6*	7.6*	5.9	7.7*	4.3	5.7	2.9	3.9*	<b>9.0</b>
	2 pt. + blade down			7.6*	7.6*	7.7*	7.7*	6.4	7.1*	3.9*	3.9*	
	4 pt. outriggers down			7.6*	7.6*	7.7*	7.7*	7.1*	7.1*	3.9*	3.9*	
<b>3.0</b>	Stabilizers raised	15.5	17.9*	8.6	11.8	5.8	7.7	4.2	5.7	2.9	4.0	<b>9.3</b>
	2 pt. + blade down	17.9*	17.9*	12.1*	12.1*	8.6	9.1*	6.3	7.5*	4.6	5.6*	
	4 pt. outriggers down	17.9*	17.9*	12.1*	12.1*	9.1*	9.1*	7.5*	7.5*	5.6*	5.6*	
<b>1.5</b>	Stabilizers raised	15.0	16.7*	8.4	11.5	5.7	7.6	4.1	5.6	2.8	3.9	<b>9.4</b>
	2 pt. + blade down	16.7*	16.7*	12.9	13.7*	8.5	9.9*	6.3	7.8*	4.5	6.4*	
	4 pt. outriggers down	16.7*	16.7*	13.7*	13.7*	9.9*	9.9*	7.5	7.8*	5.6	6.4*	
<b>0</b>	Stabilizers raised	14.9	18.3*									

# Clamshell Grab

with Two-Piece Boom 5.80 m HD



## Digging Envelope

with quick coupler	1	2	3	4
Stick length	m 2.25	2.45	2.65	3.05
Max. digging depth	m 7.35	7.55	7.75	8.15
Max. reach at ground level	m 9.50	9.65	9.85	10.25
Max. dumping height	m 7.30	7.45	7.60	7.90

## Clamshell Grab Model GM 10B

Max. tooth force	73 kN (7.4 t)
Max. torque of hydr. swivel	1.76 kNm

## Operating Weight

The operating weight includes the basic machine with 8 tyres plus intermediate rings, two-piece boom 5.80 m (HD), stick 2.45 m, quick coupler SW48 and clamshell grab model GM 10B/1.00 m<sup>3</sup> (1,000 mm without ejector).

Undercarriage versions	Weight (kg)
A 924 Heavy Lift Litronic® with 2 pt. outriggers + stabilizer blade	27,200
A 924 Heavy Lift Litronic® with 4 pt. outriggers	27,500

## Clamshell Grab Model GM 10B Machine stability per ISO 10567\* (75% of tipping capacity)

Width of clamshells	Capacity	Weight	Stabilizers raised				2 point outriggers + stabilizer blade down				4 point outriggers down			
			Stick length (m)				Stick length (m)				Stick length (m)			
			2.25	2.45	2.65	3.05	2.25	2.45	2.65	3.05	2.25	2.45	2.65	3.05
320 <sup>1)</sup>	0.17	770	■	■	■	■	■	■	■	■	■	■	■	■
400 <sup>1)</sup>	0.22	820	■	■	■	■	■	■	■	■	■	■	■	■
600 <sup>1)</sup>	0.35	860	■	■	■	■	■	■	■	■	■	■	■	■
800 <sup>1)</sup>	0.45	910	■	■	■	■	■	■	■	■	■	■	■	■
1,000 <sup>1)</sup>	0.60	970	■	■	■	■	■	■	■	■	■	■	■	■
1,000 <sup>1)3)</sup>	1.00	1,040	■	■	■	■	■	■	■	■	■	■	■	■
1,500 <sup>1)3)</sup>	1.50	1,160	■	■	△	△	■	■	■	■	■	■	■	■
1,800 <sup>1)3)</sup>	1.80	1,280	△	△	—	—	■	■	■	■	■	■	■	■
320 <sup>2)</sup>	0.17	820	■	■	■	■	■	■	■	■	■	■	■	■
400 <sup>2)</sup>	0.22	880	■	■	■	■	■	■	■	■	■	■	■	■
600 <sup>2)</sup>	0.30	950	■	■	■	■	■	■	■	■	■	■	■	■
800 <sup>2)</sup>	0.45	1,010	■	■	■	■	■	■	■	■	■	■	■	■

\* Indicated loads are based on ISO 10567 and do not exceed 75% of tipping or 87% of hydraulic capacity, max. stick length without quick coupler, lifted 360° on firm with blocked oscillating axle

<sup>1)</sup> without ejector

<sup>2)</sup> with ejector

<sup>3)</sup> Shells for loose material

Max. material weight ■ = ≤ 1.8 t/m<sup>3</sup>, ■ = ≤ 1.5 t/m<sup>3</sup>, △ = ≤ 1.2 t/m<sup>3</sup>, — = not authorised



# Attachments

## Ditch Cleaning Buckets/Tilt Buckets

### Ditch Cleaning Buckets Machine stability per ISO 10567\* (75% of tipping capacity)

Cutting width mm	Capacity ISO 7451 <sup>1)</sup> m <sup>3</sup>	Weight kg	Stabilizers raised				2 point outriggers + stabilizer blade down				4 point outriggers down			
			Stick length (m)				Stick length (m)				Stick length (m)			
			2.25	2.45	2.65	3.05	2.25	2.45	2.65	3.05	2.25	2.45	2.65	3.05
<b>Two-piece boom 5.80 m HD</b>														
1,500 <sup>2)</sup>	0.50	430	■	■	■	■	■	■	■	■	■	■	■	■
1,600 <sup>2)</sup>	0.80	850	■	■	■	■	■	■	■	■	■	■	■	■
2,000 <sup>2)</sup>	0.50	690	■	■	■	■	■	■	■	■	■	■	■	■
2,000 <sup>3)</sup>	0.70	520	■	■	■	■	■	■	■	■	■	■	■	■
2,000 <sup>2)</sup>	0.70	880	■	■	■	■	■	■	■	■	■	■	■	■
2,000 <sup>3)</sup>	1.20	640	■	■	■	■	■	■	■	■	■	■	■	■
2,000 <sup>2)</sup>	1.00	940	■	■	■	■	■	■	■	■	■	■	■	■
2,200 <sup>2)</sup>	0.80	880	■	■	■	■	■	■	■	■	■	■	■	■
2,200 <sup>2)</sup>	1.15	980	■	■	■	■	■	■	■	■	■	■	■	■
2,200 <sup>2)</sup>	1.40	1,000	■	■	■	△	■	■	■	■	■	■	■	■
2,400 <sup>2)</sup>	0.85	890	■	■	■	■	■	■	■	■	■	■	■	■
2,400 <sup>3)</sup>	0.85	610	■	■	■	■	■	■	■	■	■	■	■	■
2,400 <sup>3)</sup>	1.25	1,000	■	■	■	■	■	■	■	■	■	■	■	■

### Tilt Buckets Machine stability per ISO 10567\* (75% of tipping capacity)

Cutting width mm	Capacity ISO 7451 <sup>1)</sup> m <sup>3</sup>	Weight kg	Stabilizers raised				2 point outriggers + stabilizer blade down				4 point outriggers down			
			Stick length (m)				Stick length (m)				Stick length (m)			
			2.25	2.45	2.65	3.05	2.25	2.45	2.65	3.05	2.25	2.45	2.65	3.05
<b>Two-piece boom 5.80 m HD</b>														
1,500 <sup>2)</sup>	1.20	970	■	■	■	■	■	■	■	■	■	■	■	■
1,600 <sup>2)</sup>	0.80	820	■	■	■	■	■	■	■	■	■	■	■	■
1,600 <sup>2)</sup>	1.00	890	■	■	■	■	■	■	■	■	■	■	■	■
1,600 <sup>2)</sup>	1.35	970	■	■	■	■	■	■	■	■	■	■	■	■
1,600 <sup>2)</sup>	1.55	1,030	■	■	△	△	■	■	■	■	■	■	■	■

\* Indicated loads are based on ISO 10567 and do not exceed 75% of tipping or 87% of hydraulic capacity, max. stick length without quick coupler, lifted 360° on firm with blocked oscillating axle

<sup>1)</sup> comparable with SAE (heaped)

<sup>2)</sup> with 2 x 50° rotator

<sup>3)</sup> rigid ditch cleaning bucket

Max. material weight ■ = ≤ 1.8 t/m<sup>3</sup>, ■ = ≤ 1.5 t/m<sup>3</sup>, △ = ≤ 1.2 t/m<sup>3</sup>, - = not authorised

# Equipment

## Undercarriage

Dual-circuit braking system	•
Tyres (twin tyres) Mitas EM 22	•
Individual control outriggers	+
Travel speed levels (four)	•
Load holding valve on each stabilization cylinder	•
Powershift transmission, semiautomatic	•
Parking brake, maintenance-free	•
Shuttle axle lock, automatic	•
Tyres, variants	+
Protection for piston rods, stabilizer cylinder	+
Undercarriage EW 2.75 m/9'	•
Tool equipment, extended	+
Tool box left – lockable	•
Tool box right – lockable	+

## Uppercarriage

Uppercarriage right side light, 1 piece, LED	+
Uppercarriage rear light, 2 pieces, LED	+
Refuelling system with filling pump	+
Main battery switch for electrical system	•
Engine hood with gas spring	•
Service doors, lockable	•

## Hydraulic System

Shut-off valve between hydraulic tank and pump(s)	•
Pressure test fittings	•
Accumulator for controlled lowering of the attachment with the engine shut down	•
Hydraulic oil filter with integrated microfilter	•
Liebherr hydraulic oil from –20 °C to +40 °C	•
Liebherr hydraulic oil, biologically degradable	+
Liebherr hydraulic oil, specially for warm or cold regions	+
Bypass filter	+
PowerLift	•
Switchover high pressure circuit 1 and tipping cylinder	+
Switchover high pressure circuit 1 and two-piece boom	+

## Diesel Engine

Fuel anti-theft device	+
Reversible fan drive, fully automatic	+
Air pre-filter with dust discharge	+
Preheating fuel	+

## Operator's Cab

Storage compartment	•
Cab lights rear, LED	+
Cab lights front, halogen (under rain cover)	•
Cab lights front, LED (above rain cover)	+
Cab lights front, LED (under rain cover)	+
Mechanical hour meters, readable from outside the cab	•
Roof window made from impact-resistant laminated safety glass	+
Operator's seat Standard	•
Operator's seat Comfort	+
Operator's seat Premium	+
Driving alarm (acoustic signal is emitted during travel, can be switched ON/OFF)	+
Fire extinguisher	+
Front screen made from impact-resistant laminated safety glass – not adjustable	+
Windscreen retractable (including upper part)	•
Intermittent windscreen wiper with wiper washer	•
Cruise control	•
Rubber floor mat, removable	•
Dome light	•
Joystick steering	+
Coat hook	•
Automatic air conditioning	•
Fuel consumption indicator	•
Electric cooler	+
Steering wheel, wide version (cost-neutral option)	+
Steering column adjustable horizontally	•
LiDAT, vehicle fleet management	•
Automatic engine shut-down (time adjustable)	+
Emergency exit rear window	•
Positioning swing brake	+
Proportional control	+
Radio Comfort, control via display with handsfree set	+
Preparation for radio installation	•
Rain cover over front window opening	•
ROPS cab protection	•
Back-up alarm (acoustic signal is emitted traveling backward, can not be switched off)	+
All tinted windows	•
Windscreen wiper, roof	+
Windshield wiper, entire windscreen	•
Door with sliding window	•
Top guard	+
Front guard, adjustable	+
Right side window and windshield made from laminated safety glass	•
Sun visor	+
Sun blind	•
Electronic immobilizer	+
Cigarette lighter	•



## Attachment

Boom lights, 2 pieces, halogen	•
Boom lights, 2 pieces, LED	+
High pressure circuit incl. unpressurised return line and Tool Control	+
Electronic lift limitation	•
Leak oil line, additional for working tools	+
Liebherr ditch cleaning bucket	+
Liebherr quick coupler, hydraulic or mechanical	+
Liebherr tilt bucket	+
Liebherr tilt rotator	+
Liebherr sorting grab	+
Liebherr backhoe bucket	+
Liebherr tooth system	+
Liebherr clamshell grab	+
Medium pressure circuit incl. lines	+
Pipe fracture safety valves hoist cylinders	•
Pipe fracture safety valve tipping cylinder	+
Pipe fracture safety valve stick cylinder	•
Return line, pressureless (in high pressure circuit option included)	+
Hose quick coupling at end of stick	•
Quick coupling system LIKUFIX	+
Protection for bottom side of stick	+
Tool Control, 10 tool adjustments selectable over the display	+
Overload warning device	•
Two-piece boom, HD version	•



## Complete Machine

Lubrication	
Lubrication undercarriage, manually – decentralised (grease points)	•
Central lubrication system for uppercarriage and attachment, automatically (without quick coupler and connecting link) *	•
Central lubrication system, extension for quick coupler	+
Central lubrication system, extension for connecting link	+
Special coating	
Custom painting for tools	+
Special coating, variants	+
Monitoring	
Rear view monitoring with camera	•
Side view monitoring with camera	•

• = Standard, + = Option

\* = country-dependent

**Options and/or special attachments, supplied by vendors other than Liebherr, are only to be installed with the knowledge and approval of Liebherr in order to retain warranty.**

# The Liebherr Group of Companies



## Wide Product Range

The Liebherr Group is one of the largest construction equipment manufacturers in the world. Liebherr's high-value products and services enjoy a high reputation in many other fields. The wide range includes domestic appliances, aerospace and transportation systems, machine tools and maritime cranes.

## Exceptional Customer Benefit

Every product line provides a complete range of models in many different versions. With both their technical excellence and acknowledged quality, Liebherr products offer a maximum of customer benefits in practical applications.

## State-of-the-art Technology

To provide consistent, top quality products, Liebherr attaches great importance to each product area, its components and core technologies. Important modules and components are developed and manufactured in-house, for instance the entire drive and control technology for construction equipment.

## Worldwide and Independent

Hans Liebherr founded the Liebherr family company in 1949. Since that time, the enterprise has steadily grown to a group of more than 130 companies with over 41,000 employees located on all continents. The corporate headquarters of the Group is Liebherr-International AG in Bulle, Switzerland. The Liebherr family is the sole owner of the company.

[www.liebherr.com](http://www.liebherr.com)

## Liebherr-Hydraulikbagger GmbH

Liebherrstraße 12, D-88457 Kirchdorf/Iller  
☎ +49 7354 80-0, Fax +49 7354 80-72 94  
[www.liebherr.com](http://www.liebherr.com), E-Mail: [info.lhb@liebherr.com](mailto:info.lhb@liebherr.com)  
[www.facebook.com/LiebherrConstruction](https://www.facebook.com/LiebherrConstruction)