

6036

TELEHANDLER

SKYTRAK®

Performance

| | | |
|-----------------------------|-------------|----------|
| Rated Capacity | 6,000 lb | 2,722 kg |
| Maximum Lift Height | 36 ft 1 in. | 11.0 m |
| Load at Max Height | 6,000 lb | 2,722 kg |
| Maximum Forward Reach | 22 ft 4 in. | 6.8 m |
| Load at Max Reach | 1,800 lb | 816 kg |
| Frame Leveling | 10° | |
| Lift Speed (boom retracted) | | |
| Up | 11.5 sec | |
| Down | 9 sec | |
| Boom Speed | | |
| Extended | 13.5 sec | |
| Retracted | 14 sec | |
| Top Travel Speed (4-Speed) | 19 mph | 31 kph |
| Drawbar Pull (loaded) | 22,000 lb | 98 kN |
| Outside Turning Radius | 165 in. | 4.19 m |
| Operating Weight | 21,300 lb | 9,662 kg |

Standard Specifications

Engine

| | | |
|---------------------------|--------------------------|---------|
| Make and Model | Cummins QSF3.8L Tier 4 F | |
| No. of Cylinders | 4 | |
| Displacement | 229 cu in. | 3.8 L |
| Gross Power Basic | 74 hp | 55 kW |
| Maximum Torque @ 1400 rpm | 340 lb-ft | 461 Nm |
| Fuel Tank Capacity | 35 gal | 132.5 L |

Transmission

Powershift.
4-speed forward and 3-speed reverse.

Axles

Full-time planetary 4-wheel drive.
Oscillating rear axle with Stabil-Trak system.

Brakes

Hydraulically actuated inboard wet disc brakes.
Emergency brake with transmission declutch feature.

Tires

| | |
|----------|----------------------|
| Standard | 370/75-28 |
| Optional | Foam-Filled or Solid |

Cab

| | |
|---|---|
| Certified ROPS/FOPS structure | Rear view mirrors |
| Adjustable suspension seat with retractable seat belt | Single joystick controls Integrated arm rest |

Steering 4-Wheel

Power steering.
Operator selectable 4-wheel circle, 4-wheel crab, 2-wheel front.

Instruments

- DEF gauge
- Voltmeter
- Hourmeter
- Engine oil pressure gauge
- Temperature gauge
- Fuel gauge



Hydraulic System-Implement

| | | |
|-----------|---|---------|
| Capacity | 45.5 gal | 172.2 L |
| Gear Pump | Variable flow, load sensitive hydraulic system. | |

Load holding valves on frame level, stabilizer, attachment tilt, extend and lift cylinders.
Auxiliary hydraulics used for all attachments equipped with cylinders or other hydraulic components. Consists of valves, controls and hydraulic lines.

Accessories & Options

- Enclosed Cab
- Work Lights
- Road Lights
- Rotating Beacon
- Fenders
- Reverse Sensing System
- Air Conditioning

Attachments

| | | |
|--------------------------------|---|--|
| Standard Carriage | 50 in. 60 in. 72 in. | 1.3 m 1.5 m 1.8 m |
| Side-Tilt Carriage | 50 in. 60 in. 72 in. | 1.3 m 1.5 m 1.8 m |
| Swing 90° Carriage | 72 in. | 1.8 m |
| Side-Shift Carriage | 50 in. | 1.3 m |
| Dual Fork Positioning Carriage | 50 in. | 1.3 m |
| Tower | 8 ft (2.4 m); 50 in. (1.3 m) Standard Carriage | |
| Pallet Forks | 2.36 in. x 4 in. x 48 in. 2.36 in. x 5 in. x 48 in. 2.00 in. x 6 in. x 72 in. | 60 mm x 102 mm x 1.2 m 60 mm x 127 mm x 1.2 m 51 mm x 152 mm x 1.8 m |
| Lumber Forks | 2 in. x 7 in. x 60 in. 2.36 in. x 6 in. x 60 in. | 51 mm x 178 mm x 1.5 m 60 mm x 152 mm x 1.5 m |
| Cubing Forks | 2 in. x 2 in. x 48 in. | 51 mm x 51 mm x 1.2 m |
| Fork Extensions | 90 in. | 2.3 m |
| Material Bucket | 72 in., 1.0 cu yd 96 in., 1.5 cu yd 102 in., 2.0 cu yd | 1.8 m, 0.76 m ³ 2.4 m, 1.15 m ³ 2.6 m, 1.53 m ³ |
| Grapple Bucket | 96 in., 1.75 cu yd | 2.4 m, 1.34 m ³ |
| Truss Boom | 12 ft, 2,000 lb 15 ft, 2,000 lb 12 ft with winch, 2,000 lb | 3.7 m, 907 kg 4.6 m, 907 kg 3.7 m, 907 kg |
| Fork Mounted Work Platform | 8 ft, 1,000 lb Capacity | 2.4 m, 455 kg Capacity |
| Lifting Hook, Fork Mounted | | |
| Material Handling Arm | 4,000 lb Capacity | 1,814 kg Capacity |
| Trash Hopper | 72 in., 1.9 cu yd 2,000 lb Capacity | 1.8 m, 1.5 m ³ 907 kg Capacity |

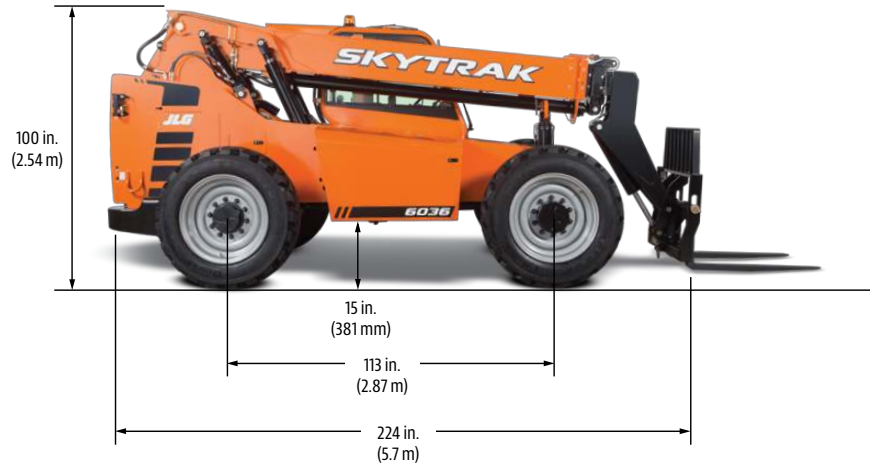
6036

TELEHANDLER

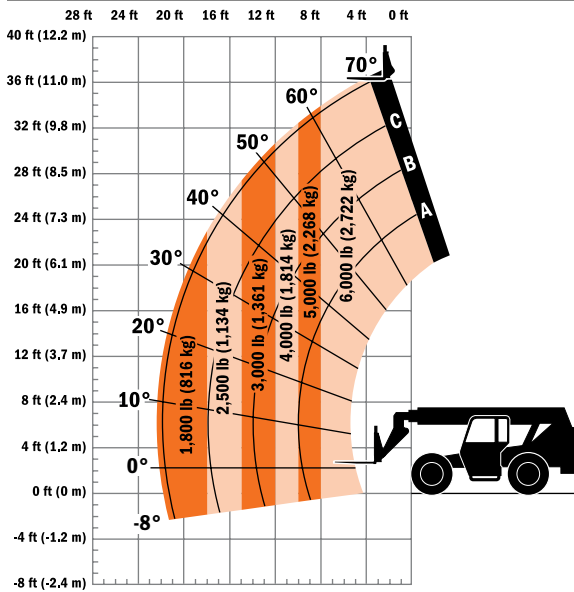
SKYTRAK®

Dimensions

All dimensions are approximate.



Load Chart



The JLG "1, 2 & 5" Warranty

We provide coverage for one (1) full year on the entire machine, two (2) full years or 2,000 hours on the drivetrain and cover all specified major structural components for five (5) years. Due to continuous product improvements, we reserve the right to make specification and/or equipment changes without prior notification.

Part No.: 3132403
R041810
Printed in USA



JLG Industries, Inc.
1 JLG Drive
McCconnellsburg, PA 17233-9533
Telephone 717-485-5161
Toll-free in US 877-JLG-LIFT
Fax 717-485-6417
www.jlg.com

An Oshkosh Corporation Company